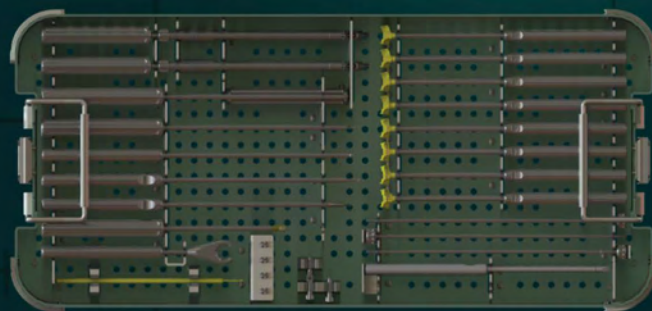


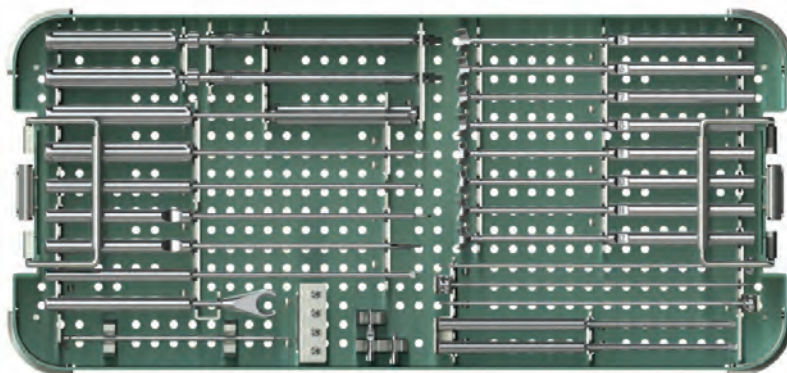
ADDI+IVE IMPLANTS



SureMAX[®] CERVICAL SYSTEMS

INSTRUMENTATION

SureMAX-SA™ INSTRUMENTATION



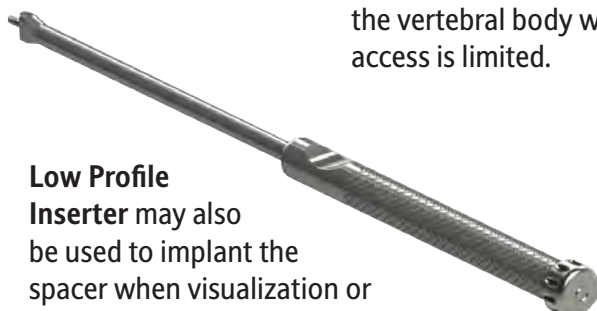
SureMAX-SA Instrument Sterilization Tray



Awl Guide Inserter will lock on to the spacer as well as provide the proper trajectory for the Straight Awl and screw placement.



Angled Shaft Instrumentation can prepare screw holes as well as drive the screw into the vertebral body when direct access is limited.



Low Profile Inserter may also be used to implant the spacer when visualization or direct access is limited.

ADDI+IVE IMPLANTS

3101 E SHEA BLVD, SUITE 122 602-795-8850 phone
PHOENIX, AZ 85028 602-595-7896 fax

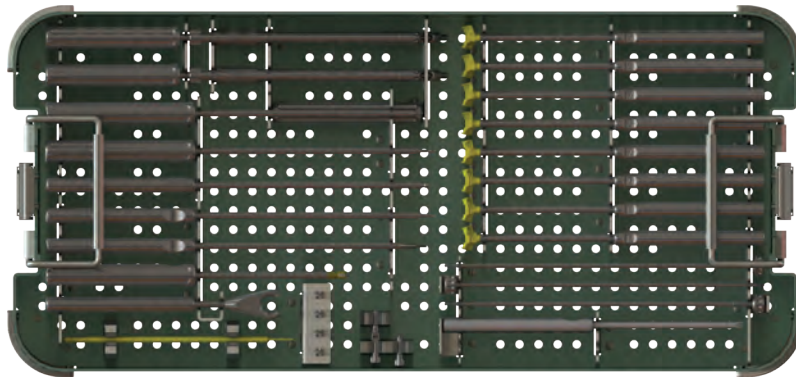
Sales@AdditiveImplants.com

 ADDITIVEIMPLANTS.COM

 [ADDITIVEIMPLANTS](https://www.linkedin.com/company/additiveimplants)



SUREMAX®-SA INSTRUMENTATION PLATFORM



SureMAX®-SA Instrument Sterilization Tray
1022-02

Angled Shaft
Tube Assembly
1022-1301



Low Profile
Inserter
1022-10157

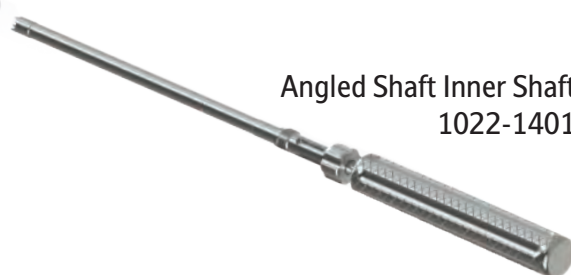


Inserter
Inner Shaft
1022-301



Awl Guide
Inserters
1022-502
thru 1022-1202

Angled Shaft Inner Shaft
1022-1401



Angled Shaft Drill Tip
1022-1501



Angled Shaft Driver Tip
1022-1601



Angled Helical Screw Tip
1022-2801





Straight Awl
1022-1701



Angled Awl
1022-1801



Hand Drill
1022-1901



Screwdriver
1022-2101



Cam Locker
1022-2201



Short Handled
Screwdriver
1022-2901

Helical Screw
Straight Inserter
1022-2301



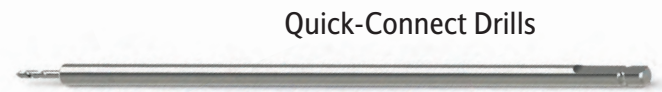
Helical Screw
U-Joint Inserter
1022-2401



Helical Screw Tamp
1022-2501



Counter Torque
1022-2601



Quick-Connect Drills
1022-2701 (Size 14)



1022-3001 (Size 16)



1022-3101 (Size 18)

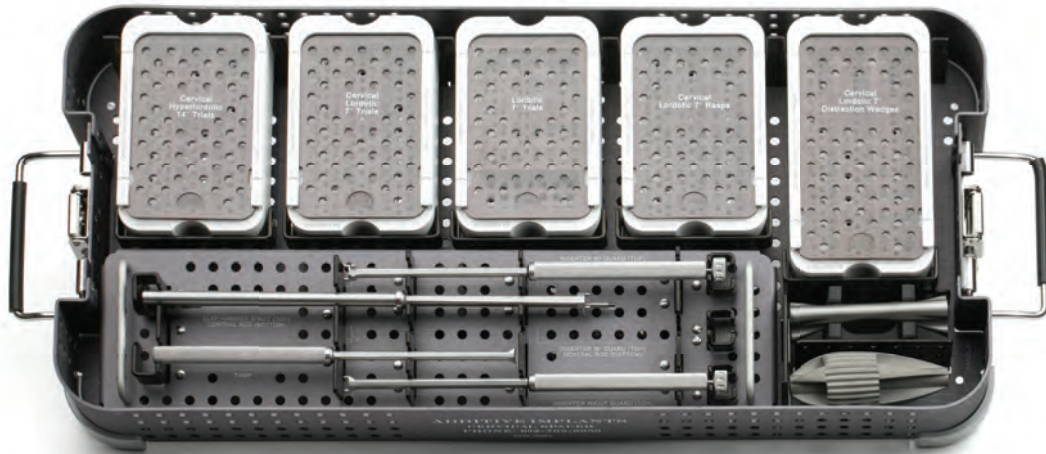


1022-3201 (Size 20)

SureMAX®-SA Instruments

Part Number	Description
1022-01	SureMAX-SA Sterilization Tray — Lid
1022-02	SureMAX-SA Sterilization Tray — Base
1022-10157	Low Profile Inserter
1022-301	Inserter Inner Shaft
1022-502	Awl Guide Inserter 5
1022-602	Awl Guide Inserter 6
1022-702	Awl Guide Inserter 7
1022-802	Awl Guide Inserter 8
1022-902	Awl Guide Inserter 9
1022-1002	Awl Guide Inserter 10
1022-1102	Awl Guide Inserter 11
1022-1202	Awl Guide Inserter 12
1022-1301	Angled Shaft
1022-1401	Angled Inner Shaft
1022-1501	Angled Shaft Drill Tip
1022-1601	Angled Shaft Driver Tip
1022-1701	Awl – Straight
1022-1801	Awl – Angled
1022-1901	Hand Drill
1022-2101	Screwdriver
1022-2201	Cam Locker
1022-2301	Helical Screw Straight Inserter
1022-2401	Helical Screw U-Joint Inserter
1022-2501	Tamp
1022-2601	Counter Torque
1022-2701	Quick-Connect Drill
1022-3001	Drill
1022-3101	Drill
1022-3201	Drill
1022-2901	Short Handled Driver
1022-2801	Helical Screw Angled Tip

SureMAX CERVICAL SPACER INSTRUMENTATION



Single Modular Tray



Distraction Wedges to help open collapsed disc spaces.



Aggressive Rasps with convex surfaces to strip and shape concavity of vertebral endplates.



Trays match the geometry of the implants for an accurate assessment of size.



Variety of Inserter Tools, with and without guards, allow for single handed tool/implant application.



Unique Slap Hammer designs allow for enhanced visualization of the operative site when using a microscope.

ADDITIVE IMPLANTS

3101 E SHEA BLVD
PHOENIX, AZ 85028

602-795-8850 phone
602-595-7896 fax

Sales@AdditiveImplants.com

ADDITIVEIMPLANTS.COM

[ADDITIVEIMPLANTS](https://www.linkedin.com/company/additiveimplants)



SureMAX® Instruments : Rasps

Depth x Width (mm)	Height (mm)	Part Numbers
		Lordotic 7°
Small 12 x 14	5	9101-07121405
	6	9101-07121406
	7	9101-07121407
	8	9101-07121408
	9	9101-07121409
	10	9101-07121410
	11	9101-07121411
	12	9101-07121412
Medium 14 x 16	5	9101-07141605
	6	9101-07141606
	7	9101-07141607
	8	9101-07141608
	9	9101-07141609
	10	9101-07141610
	11	9101-07141611
	12	9101-07141612
Large 15 x 18	5	9101-07151805
	6	9101-07151806
	7	9101-07151807
	8	9101-07151808
	9	9101-07151809
	10	9101-07151810
	11	9101-07151811
	12	9101-07151812



SureMAX® Instruments : Trials

Depth x Width (mm)	Height (mm)	Part Numbers	
		Lordotic 7°	Hyperlordotic 14°
Small 12 x 14	5	9102-07121405	9102-14121405
	6	9102-07121406	9102-14121406
	7	9102-07121407	9102-14121407
	8	9102-07121408	9102-14121408
	9	9102-07121409	9102-14121409
	10	9102-07121410	9102-14121410
	11	9102-07121411	9102-14121411
	12	9102-07121412	9102-14121412
Medium 14 x 16	5	9102-07141605	9102-14141605
	6	9102-07141606	9102-14141606
	7	9102-07141607	9102-14141607
	8	9102-07141608	9102-14141608
	9	9102-07141609	9102-14141609
	10	9102-07141610	9102-14141610
	11	9102-07141611	9102-14141611
	12	9102-07141612	9102-14141612
Large 15 x 18	5	9102-07151805	9102-14151805
	6	9102-07151806	9102-14151806
	7	9102-07151807	9102-14151807
	8	9102-07151808	9102-14151808
	9	9102-07151809	9102-14151809
	10	9102-07151810	9102-14151810
	11	9102-07151811	9102-14151811
	12	9102-07151812	9102-14151812



SureMAX® Instruments : Distraction Wedges

Size	Height (mm)	Part Numbers
Small	2.5	9100-07121402
	3.5	9100-07121403
	4.5	9100-07121404
	5.5	9100-07121405
	6.5	9100-07121406
	7.5	9100-07121407
	8.5	9100-07121408
	9.5	9100-07121409
	10.5	9100-07121410
	11.5	9100-07121411
	12.5	9100-07121412
Medium	2.5	9100-07141602
	3.5	9100-07141603
	4.5	9100-07141604
	5.5	9100-07141605
	6.5	9100-07141606
	7.5	9100-07141607
	8.5	9100-07141608
	9.5	9100-07141609
	10.5	9100-07141610
	11.5	9100-07141611
	12.5	9100-07141612
Large	2.5	9100-07151802
	3.5	9100-07151803
	4.5	9100-07151804
	5.5	9100-07151805
	6.5	9100-07151806
	7.5	9100-07151807
	8.5	9100-07151808
	9.5	9100-07151809
	10.5	9100-07151810
	11.5	9100-07151815
	12.5	9100-07151812



SureMAX® Instruments

Part Numbers	Descriptions
9100-0001	Cervical Interbody Sterilization Tray
9100-0004	Cervical Tamp
9100-0005	Mallet: one poly, one metal surface, 11.5 ounces
9100-0010	Cervical Inserter without Guard
9100-0011	Cervical Inserter with Guard
9100-0020	Cervical Slap Hammer
9100-0025	Slap Hammer Handle — Ergonomic
9100-0026	Slap Hammer Handle — Egg Shape

ADDITIVE IMPLANTS

DELIVERING UNMATCHED OPTIONS IN CERVICAL SPACER DESIGN

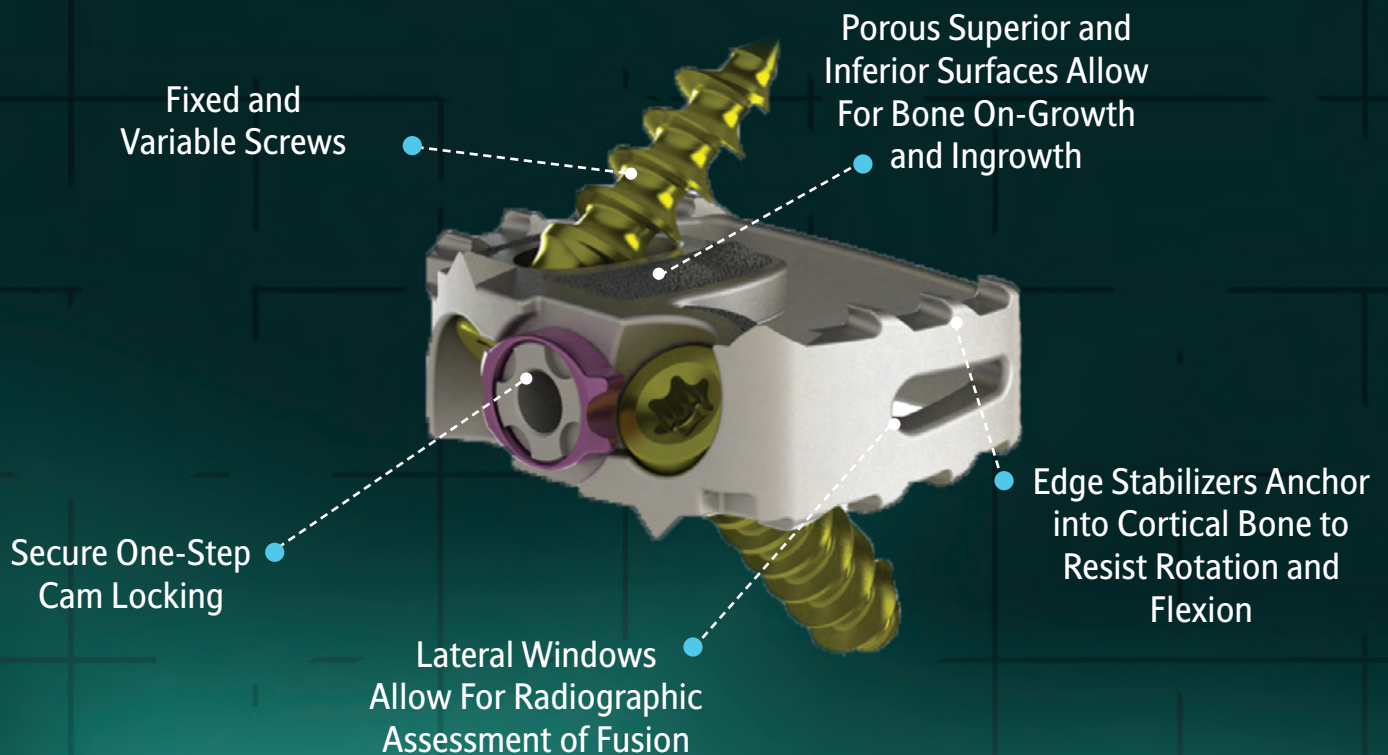
SureMAX-SA™ STANDALONE CERVICAL SPACER

Unmatched Options of Sizes, Lordotic Angles, Anchors and Easy to Use Instruments

7°, 10° and 14° Lordosis

Footprints of 12 x 14 mm, 14 x 16 mm, 15 x 18 mm, 15 x 20 mm

Heights of 5 mm to 12 mm



Patent Pending

ADDI+IVE IMPLANTS

DELIVERING UNMATCHED OPTIONS IN CERVICAL SPACER DESIGN

SureMAX[®]-X CERVICAL SPACER

The Advantages of Titanium with the Stiffness of PEEK

7° and 10° Lordosis

Footprints in 12 x 14 mm, 14 x 16 mm, 15 x 18 mm, 15 x 20 mm
Heights of 5 mm to 9 mm

Patented Lobe design allows for more evenly distributed contact with the vertebral endplates ●

Convex surfaces to match the concavity of spinal endplates ●



Roughened and optimized acid etched porous surface ●

One set of instruments for a family of Cervical Spacers, SureMAX[®] and SureMAX[®]-X

Large lateral windows to facilitate radiographic confirmation of fusion ●

ADDI+IVE IMPLANTS

SETTING A NEW STANDARD IN CERVICAL SPACER DESIGN

SureMAX CERVICAL SPACER

Delivering Greater Stability at the Bone Implant Interface

Hyperlordotic 14° and Lordotic 7° options

Footprints in 12 x 14 mm, 14 x 16 mm, 15 x 18 mm

Heights of 5 mm to 12 mm

Spikes and superior/inferior window geometry to resist rotation

Convex surfaces to match the spinal endplates

Roughened and optimized porous surfaces

Large lateral windows to allow for radiographic confirmation of fusion

DOS – Dynamic OsteoStabilizers to resist bending motions



ADDITIVE IMPLANTS

3101 E SHEA BLVD
PHOENIX, AZ 85028

602-795-8850 phone
602-595-7896 fax

Sales@AdditiveImplants.com



ADDITIVEIMPLANTS.COM



[ADDITIVEIMPLANTS](https://www.linkedin.com/company/additiveimplants)

